

Zanaflex Capsules™

(tizanidine hydrochloride)

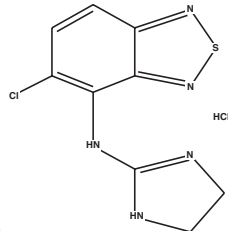
Zanaflex® Tablets

(tizanidine hydrochloride)

PHARMACOKINETIC DIFFERENCES BETWEEN ZANAFLEX CAPSULES™ AND ZANAFLEX® TABLETS:
ZANAFLEX CAPSULES™ ARE NOT BIOEQUIVALENT TO ZANAFLEX® TABLETS IN THE FED STATE. THE PRESCRIBER SHOULD BE THOROUGHLY FAMILIAR WITH THE COMPLEX EFFECTS OF FOOD ON TIZANIDINE PHARMACOKINETICS (see PHARMACOKINETICS and DOSAGE AND ADMINISTRATION).

DESCRIPTION

Zanaflex® (tizanidine hydrochloride) is a centrally acting α_2 -adrenergic agonist. Tizanidine HCl (tizanidine) is a white to off-white, fine crystalline powder, which is odorless or with a faint characteristic odor. Tizanidine is slightly soluble in water and methanol; solubility in water decreases as the pH increases. Its chemical name is 5-chloro-4-(2-imidazolylamino)-2,1,3-benzothiazole hydrochloride. Tizanidine's molecular formula is $C_9H_8ClN_5S$, its molecular weight is 290.2 and its structural formula is:



Zanaflex Capsules™ are supplied as 2, 4, and 6 mg capsules and Zanaflex® tablets are supplied as 2 and 4 mg tablets for oral administration. Zanaflex Capsules™ are composed of the active ingredient, tizanidine hydrochloride (2.29 mg equivalent to 2 mg tizanidine base, 4.58 mg equivalent to 4 mg tizanidine base), and the inactive ingredients, hydroxypropyl methyl cellulose, silicon dioxide, sugar spheres, titanium dioxide, gelatin, and colorants.

Zanaflex® tablets are composed of the active ingredient, tizanidine hydrochloride (2.29 mg equivalent to 2 mg tizanidine base and 4.58 mg equivalent to 4 mg tizanidine base), and the inactive ingredients, silicon dioxide colloidal, stearic acid, microcrystalline cellulose and anhydrous lactose.

CLINICAL PHARMACOLOGY

MECHANISM OF ACTION

Tizanidine is an agonist at α_2 -adrenergic receptor sites and presumably reduces spasticity by increasing presynaptic inhibition of motor neurons. In animal models, tizanidine has no direct effect on skeletal muscle fibers or the neuromuscular junction, and no major effect on monosynaptic spinal reflexes. The effects of tizanidine are greatest on polysynaptic pathways. The overall effect of these actions is thought to reduce facilitation of spinal motor neurons. The imidazolone chemical structure of tizanidine is related to that of the anti-hypertensive drug clonidine and other α_2 -adrenergic agonists. Pharmacological studies in animals show similarities between the two compounds, but tizanidine was found to have one-tenth to one-fiftieth (1/50) of the potency of clonidine in lowering blood pressure.

PHARMACOKINETICS

Absorption and Distribution

Following oral administration, tizanidine is essentially completely absorbed. The absolute oral bioavailability of tizanidine is approximately 40% (CV = 24%), due to extensive first-pass hepatic metabolism. Tizanidine is extensively distributed throughout the body with a mean steady state volume of distribution of 2.4 L/kg (CV = 21%) following intravenous administration in healthy adult volunteers. Tizanidine is approximately 30% bound to plasma proteins.

Pharmacokinetics, Metabolism and Excretion

Tizanidine has linear pharmacokinetics over a dose of 1 to 20 mg. Tizanidine has a half-life of approximately 2.5 hours (CV=33%). Approximately 95% of an administered dose is metabolized. The primary cytochrome P450 isoenzyme involved in tizanidine metabolism is CYP1A2. Tizanidine metabolites are not known to be active; their half-lives range from 20 to 40 hours.

Following single and multiple oral dosing of ^{14}C -tizanidine, an average of 60% and 20% of total radioactivity was recovered in the urine and feces, respectively.

Pharmacokinetic differences between Zanaflex Capsules™ and Zanaflex® Tablets

Zanaflex Capsules™ and Zanaflex® tablets are bioequivalent to each other under fasted conditions, but not under fed conditions.

A single dose of either two 4 mg tablets or two 4 mg capsules was administered under fed and fasting conditions in an open label, four period, randomized crossover study in 96 human volunteers, of whom 81 were eligible for the statistical analysis.

Following oral administration of either the tablet or capsule (in the fasted state), tizanidine has peak plasma concentrations occurring 1.0 hours after dosing with a half-life of approximately 2 hours.

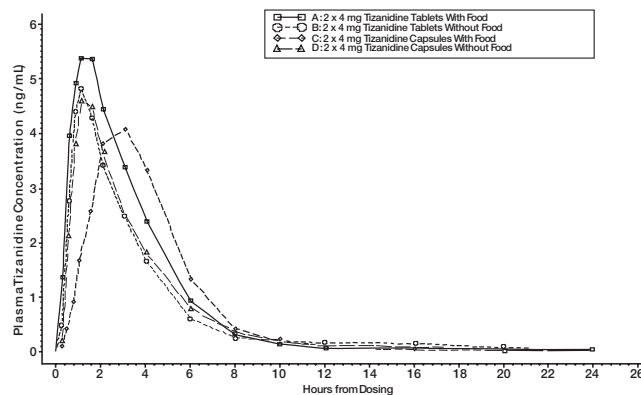
When two 4 mg tablets were administered with food the mean maximal plasma concentration is increased by approximately 30%, and the median time to peak plasma concentration is increased by 25 minutes, to 1 hour and 25 minutes.

In contrast, when two 4 mg capsules are administered with food the mean maximal plasma concentration is decreased by 20%, the median time to peak plasma concentration is increased by 2 hours to 3 hours. Consequently, the mean Cmax for the capsule when administered with food is approximately 2/3 the Cmax for the tablet when administered with food.

Food also increases the extent of absorption for both the tablets and capsules. The increase with the tablet (~30%) is significantly greater than with the capsule (~10%). Consequently when each is administered with food, the amount absorbed from the capsule is about 80% of the amount absorbed from the tablet (See Figure 1). Administration of the capsule contents sprinkled on applesauce is not bioequivalent to administration of an intact capsule under fasting conditions. Administration of the capsule contents on applesauce results in a 15% - 20% increase in Cmax and AUC of tizanidine compared to administration of an intact capsule while fasting, and a 15 minute decrease in the median lag time and time to peak concentration.

Zanaflex Capsules™ (tizanidine hydrochloride)

Figure 1: Mean Tizanidine Concentration vs. Time Profiles For Zanaflex Tablets and Capsules (2 x 4 mg) Under Fasted and Fed Conditions



SPECIAL POPULATIONS

Age Effects

No specific pharmacokinetic study was conducted to investigate age effects. Cross study comparison of pharmacokinetic data following single dose administration of 6 mg tizanidine showed that younger subjects cleared the drug four times faster than the elderly subjects. Tizanidine has not been evaluated in children (see PRECAUTIONS).

Hepatic Impairment

The influence of hepatic impairment on the pharmacokinetics of tizanidine has not been evaluated. Because tizanidine is extensively metabolized in the liver, hepatic impairment would be expected to have significant effects on pharmacokinetics of tizanidine. Tizanidine should ordinarily be avoided or used with extreme caution in this patient population (see WARNINGS).

Renal Impairment

Tizanidine clearance is reduced by more than 50% in elderly patients with renal insufficiency (creatinine clearance < 25 mL/min) compared to healthy elderly subjects; this would be expected to lead to a longer duration of clinical effect. Tizanidine should be used with caution in renally impaired patients (see PRECAUTIONS).

Gender Effects

No specific pharmacokinetic study was conducted to investigate gender effects. Retrospective analysis of pharmacokinetic data, however, following single and multiple dose administration of 4 mg tizanidine showed that gender had no effect on the pharmacokinetics of tizanidine.

Race Effects

Pharmacokinetic differences due to race have not been studied.

DRUG INTERACTIONS

Fluvoxamine

The effect of fluvoxamine on the pharmacokinetics of tizanidine was studied in 10 healthy subjects. The Cmax, AUC, and half-life of tizanidine increased by 12-fold, 33-fold, and 3-fold, respectively. These changes resulted in significant decreases in blood pressure, increased drowsiness, and psychomotor impairment. (See CONTRAINDICATIONS and WARNINGS).

Ciprofloxacin

The effect of ciprofloxacin on the pharmacokinetics of tizanidine was studied in 10 healthy subjects. The Cmax and AUC of tizanidine increased by 7-fold and 10-fold, respectively. These changes resulted in significant decreases in blood pressure, increased drowsiness, and psychomotor impairment. (See CONTRAINDICATIONS and WARNINGS).

CYP1A2 Inhibitors

The interaction between tizanidine and either fluvoxamine or ciprofloxacin is most likely due to inhibition of CYP1A2 by fluvoxamine or ciprofloxacin. Although there have been no clinical studies evaluating the effects of other CYP1A2 inhibitors on tizanidine, other CYP1A2 inhibitors, such as zileuton, other fluoroquinolones, antiarrhythmics (amiodarone, mexiletine, propafenone and verapamil), cimetidine, famotidine oral contraceptives, acyclovir and ticlopidine, may also lead to substantial increases in tizanidine blood concentrations. (See WARNINGS)

Oral Contraceptives

No specific pharmacokinetic study was conducted to investigate interaction between oral contraceptives and tizanidine. Retrospective analysis of population pharmacokinetic data following single and multiple dose administration of 4 mg tizanidine, however, showed that women concurrently taking oral contraceptives had 50% lower clearance of tizanidine compared to women not on oral contraceptives (see PRECAUTIONS).

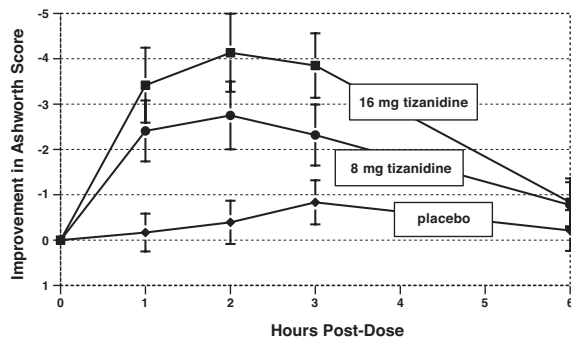
CLINICAL STUDIES

Tizanidine's capacity to reduce increased muscle tone associated with spasticity was demonstrated in two adequate and well controlled studies in patients with multiple sclerosis or spinal cord injury.

In one study, patients with multiple sclerosis were randomized to receive single oral doses of drug or placebo. Patients and assessors were blind to treatment assignment and efforts were made to reduce the likelihood that assessors would become aware indirectly of treatment assignment (e.g., they did not provide direct care to patients and were prohibited from asking questions about side effects). In all, 140 patients received either placebo, 8 mg or 16 mg of tizanidine. Response was assessed by physical examination; muscle tone was rated on a 5 point scale (Ashworth score), with a score of 0 used to describe normal muscle tone. A score of 1 indicated a slight spastic catch while a score of 2 indicated more marked muscle resistance. A score of 3 was used to describe considerable increase in tone, making passive movement difficult. A muscle immobilized by spasticity was given a score of 4. Spasm counts were also collected. Assessments were made at 1, 2, 3 and 6 hours after treatment. A statistically significant reduction of the Ashworth score for Zanaflex compared to placebo was detected at 1, 2 and 3 hours after treatment. Figure 2 below shows a comparison of the mean change in muscle tone from baseline as measured by the Ashworth scale. The greatest reduction in muscle tone was 1 to 2 hours after treatment. By 6 hours after treatment, muscle tone in the 8 and 16 mg tizanidine groups was indistinguishable from muscle tone in placebo treated patients. Within a given patient, improvement in muscle tone was correlated with plasma

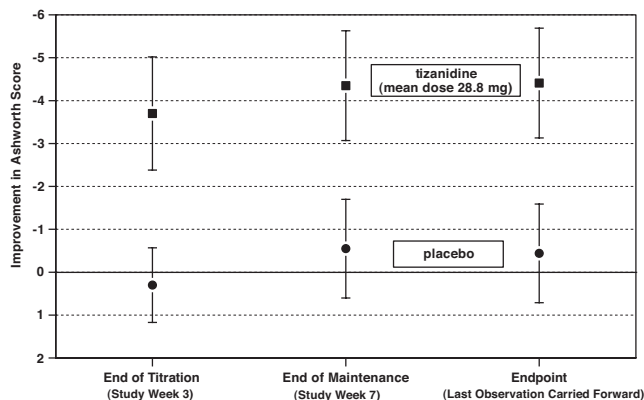
concentration. Plasma concentrations were variable from patient to patient at a given dose. Although 16 mg produced a larger effect, adverse events including hypotension were more common and more severe than in the 8 mg group. There were no differences in the number of spasms occurring in each group.

Figure 2: Single Dose Study—Mean Change in Muscle Tone from Baseline as Measured by the Ashworth Scale ± 95% Confidence Interval (A Negative Ashworth Score Signifies an Improvement in Muscle Tone from Baseline)



In a multiple dose study, 118 patients with spasticity secondary to spinal cord injury were randomized to either placebo or tizanidine. Steps similar to those taken in the first study were employed to ensure the integrity of blinding. Patients were titrated over 3 weeks up to a maximum tolerated dose or 36 mg daily given in three unequal doses (e.g., 10 mg given in the morning and afternoon and 16 mg given at night). Patients were then maintained on their maximally tolerated dose for 4 additional weeks (i.e., maintenance phase). Throughout the maintenance phase, muscle tone was assessed on the Ashworth scale within a period of 2.5 hours following either the morning or afternoon dose. The number of daytime spasms was recorded daily by patients. At endpoint (the protocol-specified time of outcome assessment), there was a statistically significant reduction in muscle tone and frequency of spasms in the tizanidine treated group compared to placebo. The reduction in muscle tone was not associated with a reduction in muscle strength (a desirable outcome) but also did not lead to any consistent advantage of tizanidine treated patients on measures of activities of daily living. Figure 3 below shows a comparison of the mean change in muscle tone from baseline as measured by the Ashworth scale.

Figure 3: Multiple Dose Study—Mean Change in Muscle Tone 0.5–2.5 Hours After Dosing as Measured by the Ashworth Scale ± 95% Confidence Interval (A Negative Ashworth Score Signifies an Improvement in Muscle Tone from Baseline)



INDICATIONS AND USAGE

Tizanidine is a short-acting drug for the management of spasticity. Because of the short duration of effect, treatment with tizanidine should be reserved for those daily activities and times when relief of spasticity is most important (see DOSING AND ADMINISTRATION).

CONTRAINDICATIONS

Concomitant use of tizanidine with fluvoxamine or with ciprofloxacin, potent inhibitors of CYP1A2, is contraindicated. Significant alterations of pharmacokinetic parameters of tizanidine including increased AUC, t1/2, Cmax, increased oral bioavailability and decreased plasma clearance have been observed with concomitant administration of either fluvoxamine or ciprofloxacin. This pharmacokinetic interaction can result in potentially serious adverse events (See WARNINGS and CLINICAL PHARMACOLOGY: Drug Interactions).

WARNINGS

LIMITED DATA BASE FOR CHRONIC USE OF SINGLE DOSES ABOVE 8 MG AND MULTIPLE DOSES ABOVE 24 MG PER DAY

Clinical experience with long-term use of tizanidine at doses of 8 to 16 mg single doses or total daily doses of 24 to 36 mg (see Dosage and Administration) is limited. In safety studies, approximately 75 patients have been exposed to individual doses of 12 mg or more for at least one year or more and approximately 80 patients have been exposed to total daily doses of 30 to 36 mg/day for at least one year or more. There is essentially no long-term experience with single, daytime doses of 16 mg. Because long-term clinical study experience at high doses is limited, only those adverse events with a relatively high incidence are likely to have been identified (see WARNINGS, PRECAUTIONS and ADVERSE REACTIONS).

HYPOTENSION

Tizanidine is an α₂-adrenergic agonist (like clonidine) and can produce hypotension. In a single dose study where blood pressure was monitored closely after dosing, two-thirds of patients treated with 8 mg of tizanidine had a 20% reduction in either the diastolic or systolic BP. The reduction was seen within 1 hour after dosing, peaked 2 to 3 hours after dosing and was associated, at times, with bradycardia, orthostatic hypotension, lightheadedness/dizziness and rarely syncope. The hypotensive effect is dose related and has been measured following single doses of ≥ 2 mg.

The chance of significant hypotension may possibly be minimized by titration of the dose and by focusing attention on signs and symptoms of hypotension prior to dose advancement. In addition, patients moving from a supine to fixed upright position may be at increased risk for hypotension and orthostatic effects.

Caution is advised when tizanidine is to be used in patients receiving concurrent antihypertensive therapy and should not be used with other α₂-adrenergic agonists. Clinically significant hypotension (decreases in both systolic and diastolic pressure) has been reported with concomitant administration of either fluvoxamine or ciprofloxacin and single doses of 4 mg of tizanidine. Therefore, concomitant use of tizanidine with fluvoxamine or with ciprofloxacin, potent inhibitors of CYP1A2, is contraindicated (see CONTRAINDICATIONS and CLINICAL PHARMACOLOGY: Drug Interactions).

RISK OF LIVER INJURY

Tizanidine occasionally causes liver injury, most often hepatocellular in type. In controlled clinical studies, approximately 5% of patients treated with tizanidine had elevations of liver function tests (ALT/SGPT, AST/SGOT) to greater than 3 times the upper limit of normal (or 2 times if baseline levels were elevated) compared to 0.4% in the control patients. Most cases resolved rapidly upon drug withdrawal with no reported residual problems. In occasional symptomatic cases, nausea, vomiting, anorexia and jaundice have been reported. Based upon postmarketing experience, death associated with liver failure has been a rare occurrence reported in patients treated with tizanidine. Monitoring of aminotransferase levels is recommended during the first 6 months of treatment (e.g., baseline, 1, 3 and 6 months) and periodically thereafter, based on clinical status. Because of the potential toxic hepatic effect of tizanidine, the drug should ordinarily be avoided or used with extreme caution in patients with impaired hepatic function.

SEDATION

In the multiple dose, controlled clinical studies, 48% of patients receiving any dose of tizanidine reported sedation as an adverse event. In 10% of these cases, the sedation was rated as severe compared to < 1% in the placebo treated patients. Sedation may interfere with everyday activity.

The effect appears to be dose related. In a single dose study, 92% of the patients receiving 16 mg, when asked, reported that they were drowsy during the 6 hour study. This compares to 76% of the patients on 8 mg and 35% of the patients on placebo. Patients began noting this effect 30 minutes following dosing. The effect peaked 1.5 hours following dosing. Of the patients who received a single dose of 16 mg, 51% continued to report drowsiness 6 hours following dosing compared to 13% in the patients receiving placebo or 8 mg of tizanidine.

In the multiple dose studies, the prevalence of patients with sedation peaked following the first week of titration and then remained stable for the duration of the maintenance phase of the study.

HALLUCINOSIS/PSYCHOTIC-LIKE SYMPTOMS

Tizanidine use has been associated with hallucinations. Formed, visual hallucinations or delusions have been reported in 5 of 170 patients (3%) in two North American controlled clinical studies. These 5 cases occurred within the first 6 weeks. Most of the patients were aware that the events were unreal. One patient developed psychoses in association with the hallucinations. One patient among these 5 continued to have problems for at least 2 weeks following discontinuation of tizanidine.

USE IN PATIENTS WITH HEPATIC IMPAIRMENT

The influence of hepatic impairment on the pharmacokinetics of tizanidine has not been evaluated. Because tizanidine is extensively metabolized in the liver, hepatic impairment would be expected to have significant effects on the pharmacokinetics of tizanidine. Tizanidine should ordinarily be avoided or used with extreme caution in patients with hepatic impairment (See also RISK OF LIVER INJURY).

POTENTIAL INTERACTION WITH FLUVOXAMINE OR CIPROFLOXACIN

In a pharmacokinetic study, tizanidine serum concentration was significantly increased (Cmax 12-fold, AUC 33-fold) when the drug was given concomitantly with fluvoxamine. Potentiated hypotensive and sedative effects were observed. Fluvoxamine and tizanidine should not be used together. (See CONTRAINDICATIONS and CLINICAL PHARMACOLOGY: Drug Interactions).

In a pharmacokinetic study, tizanidine serum concentration was significantly increased (Cmax 7-fold, AUC 10-fold) when the drug was given concomitantly with ciprofloxacin. Potentiated hypotensive and sedative effects were observed. Ciprofloxacin and tizanidine should not be used together (See CONTRAINDICATIONS and CLINICAL PHARMACOLOGY: Drug Interactions).

POSSIBLE INTERACTION WITH OTHER CYP1A2 INHIBITORS

Because of potential drug interactions, concomitant use of tizanidine with other CYP1A2 inhibitors, such as zileuton, other fluoroquinolones, antiarrhythmics (amiodarone, mexiletine, propafenone, and verapamil), cimetidine, famotidine, oral contraceptives, acyclovir and ticlopidine (see CLINICAL PHARMACOLOGY: Drug Interactions) should ordinarily be avoided. If their use is clinically necessary, they should be used with caution.

PRECAUTIONS

CARDIOVASCULAR

Prolongation of the QT interval and bradycardia were noted in chronic toxicity studies in dogs at doses equal to the maximum human dose on a mg/m² basis. ECG evaluation was not performed in the controlled clinical studies. Reduction in pulse rate has been noted in association with decreases in blood pressure in the single dose controlled study (see WARNINGS).

OPHTHALMIC

Dose-related retinal degeneration and corneal opacities have been found in animal studies at doses equivalent to approximately the maximum recommended dose on a mg/m² basis. There have been no reports of corneal opacities or retinal degeneration in the clinical studies.

USE IN RENALLY IMPAIRED PATIENTS

Tizanidine should be used with caution in patients with renal insufficiency (creatinine clearance < 25 mL/min), as clearance is reduced by more than 50%. In these patients, during titration, the individual doses should be reduced. If higher doses are required, individual doses rather than dosing frequency should be increased. These patients should be monitored closely for the onset or increase in severity of the common adverse events (dry mouth, somnolence, asthenia and dizziness) as indicators of potential overdose.

Zanaflex Capsules™ (tizanidine hydrochloride)

USE IN WOMEN TAKING ORAL CONTRACEPTIVES

Because drug interaction studies of tizanidine with oral contraceptives have shown that concomitant use may reduce the clearance of tizanidine by as much as 50%, concomitant use of tizanidine with oral contraceptives should ordinarily be avoided (see CLINICAL PHARMACOLOGY: Drug Interactions). However, if concomitant use is clinically necessary, the starting dose and subsequent titration rate of tizanidine should be reduced.

DISCONTINUING THERAPY

If therapy needs to be discontinued, particularly in patients who have been receiving high doses for long periods, the dose should be decreased slowly to minimize the risk of withdrawal and rebound hypertension, tachycardia, and hypertonia.

INFORMATION FOR PATIENTS

Patients should be advised of the limited clinical experience with tizanidine both in regard to duration of use and the higher doses required to reduce muscle tone (see WARNINGS).

Because of the possibility of tizanidine lowering blood pressure, patients should be warned about the risk of clinically significant orthostatic hypotension (see WARNINGS).

Because of the possibility of sedation, patients should be warned about performing activities requiring alertness, such as driving a vehicle or operating machinery (see WARNINGS). Patients should also be instructed that the sedation may be additive when tizanidine is taken in conjunction with drugs (baclofen, benzodiazepines) or substances (e.g., alcohol) that act as CNS depressants.

Patients should be advised of the change in the absorption profile of tizanidine if taken with food and the potential changes in efficacy and adverse effect profiles that may result (see CLINICAL PHARMACOLOGY: Pharmacokinetics).

Patients should be advised not to stop tizanidine suddenly as rebound hypertension and tachycardia may occur (see PRECAUTIONS: Discontinuing Therapy).

Tizanidine should be used with caution where spasticity is utilized to sustain posture and balance in locomotion or whenever spasticity is utilized to obtain increased function.

Because of the potential for the increased risk of serious adverse reactions including severe lowering of blood pressure and sedation when tizanidine and either fluvoxamine or ciprofloxacin are used together, tizanidine should not be used with either fluvoxamine or ciprofloxacin. Because of the potential for interaction with other CYP1A2 inhibitors, patients should be instructed to inform their physicians and pharmacists when any medication is added or removed from their regimen.

DRUG INTERACTIONS

In vitro studies of cytochrome P450 isoenzymes using human liver microsomes indicate that neither tizanidine nor the major metabolites are likely to affect the metabolism of other drugs metabolized by cytochrome P450 isoenzymes.

Fluvoxamine

The effect of fluvoxamine on the pharmacokinetics of a single 4 mg dose of tizanidine was studied in 10 healthy subjects. The C_{max}, AUC, and half-life of tizanidine increased by 12-fold, 33-fold, and 3-fold, respectively. These changes resulted in significantly decreased blood pressure, increased drowsiness, and increased psychomotor impairment. (See CONTRAINDICATIONS and WARNINGS).

Ciprofloxacin

The effect of ciprofloxacin on the pharmacokinetics of a single 4 mg dose of tizanidine was studied in 10 healthy subjects. The C_{max} and AUC of tizanidine increased by 7-fold and 10-fold, respectively. These changes resulted in significantly decreased blood pressure, increased drowsiness, and increased psychomotor impairment. (See CONTRAINDICATIONS and WARNINGS).

CYP1A2 inhibitors

The interaction between tizanidine and either fluvoxamine or ciprofloxacin is most likely due to inhibition of CYP1A2 by fluvoxamine or ciprofloxacin. Although there have been no clinical studies evaluating the effects of other CYP1A2 inhibitors on tizanidine, other CYP1A2 inhibitors, including zileuton, other fluoroquinolones, antiarrhythmics (amiodarone, mexiletine, propafenone, and verapamil), cimetidine and famotidine, oral contraceptives, acyclovir, and ticlopidine may also lead to substantial increases in tizanidine blood concentrations. Concomitant use of tizanidine with CYP1A2 inhibitors should ordinarily be avoided. If their use is clinically necessary, they should be used with caution (see WARNINGS).

Acetaminophen

Tizanidine delayed the T_{max} of acetaminophen by 16 minutes. Acetaminophen did not affect the pharmacokinetics of tizanidine.

Alcohol

Alcohol increased the AUC of tizanidine by approximately 20%, while also increasing its C_{max} by approximately 15%. This was associated with an increase in side effects of tizanidine. The CNS depressant effects of tizanidine and alcohol are additive.

Oral Contraceptives

No specific pharmacokinetic study was conducted to investigate interaction between oral contraceptives and tizanidine, but retrospective analysis of population pharmacokinetic data following single and multiple dose administration of 4 mg tizanidine showed that women concurrently taking oral contraceptives had 50% lower clearance of tizanidine than women not on oral contraceptives.

CARCINOGENESIS, MUTAGENESIS, IMPAIRMENT OF FERTILITY

No evidence for carcinogenicity was seen in two dietary studies in rodents. Tizanidine was administered to mice for 78 weeks at doses up to 16 mg/kg, which is equivalent to 2 times the maximum recommended human dose on a mg/m² basis. Tizanidine was also administered to rats for 104 weeks at doses up to 9 mg/kg, which is equivalent to 2.5 times the maximum recommended human dose on a mg/m² basis. There was no statistically significant increase in tumors in either species.

Tizanidine was not mutagenic or clastogenic in the following *in vitro* assays: the bacterial Ames test and the mammalian gene mutation test and chromosomal aberration test in Chinese hamster cells. It was also negative in the following *in vivo* assays: the bone marrow micronucleus test in mice, the bone marrow micronucleus and cytogenicity test in Chinese hamsters, the dominant lethal mutagenicity test in mice, and the unscheduled DNA synthesis (UDS) test in mice.

Tizanidine did not affect fertility in male rats at doses of 10 mg/kg, approximately 2.7 times the maximum recommended human dose on a mg/m² basis, and in females at doses of 3 mg/kg, approximately equal to the maximum recommended human dose on a mg/m² basis; fertility was reduced in males receiving 30 mg/kg (8 times the maximum recommended human dose on a mg/m² basis) and in females receiving 10 mg/kg (2.7 times the maximum recommended human dose on a mg/m² basis). At these doses, maternal behavioral effects and clinical signs were observed including marked sedation, weight loss, and ataxia.

Zanaflex Capsules™ (tizanidine hydrochloride)

PREGNANCY

Pregnancy Category C

Reproduction studies performed in rats at a dose of 3 mg/kg, equal to the maximum recommended human dose on a mg/m² basis, and in rabbits at 30 mg/kg, 16 times the maximum recommended human dose on a mg/m² basis, did not show evidence of teratogenicity. Tizanidine at doses that are equal to and up to 8 times the maximum recommended human dose on a mg/m² basis increased gestation duration in rats. Prenatal and postnatal pup loss was increased and developmental retardation occurred. Post-implantation loss was increased in rabbits at doses of 1 mg/kg or greater, equal to or greater than 0.5 times the maximum recommended human dose on a mg/m² basis. Tizanidine has not been studied in pregnant women. Tizanidine should be given to pregnant women only if clearly needed.

LABOR AND DELIVERY

The effect of tizanidine on labor and delivery in humans is unknown.

NURSING MOTHERS

It is not known whether tizanidine is excreted in human milk, although as a lipid soluble drug, it might be expected to pass into breast milk.

GERIATRIC USE

Tizanidine should be used with caution in elderly patients because clearance is decreased four-fold.

PEDIATRIC USE

There are no adequate and well-controlled studies to document the safety and efficacy of tizanidine in children.

ADVERSE REACTIONS

In multiple dose, placebo-controlled clinical studies, 264 patients were treated with tizanidine and 261 with placebo. Adverse events, including severe adverse events, were more frequently reported with tizanidine than with placebo.

COMMON ADVERSE EVENTS LEADING TO DISCONTINUATION

Forty-five of 264 (17%) patients receiving tizanidine and 13 of 261 (5%) of patients receiving placebo in three multiple dose, placebo-controlled clinical studies, discontinued treatment for adverse events. When patients withdrew from the study, they frequently had more than one reason for discontinuing. The adverse events most frequently leading to withdrawal of tizanidine treated patients in the controlled clinical studies were asthenia (weakness, fatigue and/or tiredness) (3%), somnolence (3%), dry mouth (3%), increased spasm or tone (2%), and dizziness (2%).

MOST FREQUENT ADVERSE CLINICAL EVENTS SEEN IN ASSOCIATION WITH THE USE OF TIZANIDINE

In multiple dose, placebo-controlled clinical studies involving 264 patients with spasticity, the most frequent adverse effects were dry mouth, somnolence/sedation, asthenia (weakness, fatigue and/or tiredness) and dizziness. Three-quarters of the patients rated the events as mild to moderate and one-quarter of the patients rated the events as being severe. These events appeared to be dose related.

ADVERSE EVENTS REPORTED IN CONTROLLED STUDIES

The events cited reflect experience gained under closely monitored conditions of clinical studies in a highly selected patient population. In actual clinical practice or in other clinical studies, these frequency estimates may not apply, as the conditions of use, reporting behavior, and the kinds of patients treated may differ. Table 1 lists treatment emergent signs and symptoms that were reported in greater than 2% of patients in three multiple dose, placebo-controlled studies who received tizanidine where the frequency in the tizanidine group was at least as common as in the placebo group. These events are not necessarily related to tizanidine treatment. For comparison purposes, the corresponding frequency of the event (per 100 patients) among placebo treated patients is also provided.

Table 1: Multiple Dose, Placebo-Controlled Studies—Frequent (> 2%) Adverse Events Reported for Which Tizanidine Tablets Incidence is Greater than Placebo

Event	Placebo N = 261 %	Zanaflex Tablet N = 264 %
Dry mouth	10	49
Somnolence	10	48
Asthenia*	16	41
Dizziness	4	16
UTI	7	10
Infection	5	6
Constipation	1	4
Liver function tests abnormal	<1	3
Vomiting	0	3
Speech disorder	0	3
Amblyopia (blurred vision)	<1	3
Urinary frequency	2	3
Flu syndrome	2	3
SGPT/ALT increased	<1	3
Dyskinesia	0	3
Nervousness	<1	3
Pharyngitis	1	3
Rhinitis	2	3

* (weakness, fatigue, and/or tiredness)

In the single dose, placebo-controlled study involving 142 patients with spasticity, the patients were specifically asked if they had experienced any of the four most common adverse events: dry mouth, somnolence (drowsiness), asthenia (weakness, fatigue and/or tiredness) and dizziness. In addition, hypotension and bradycardia were observed. The occurrence of these adverse effects is summarized in Table 2. Other events were, in general, reported at a rate of 2% or less.

Zanaflex Capsules™ (tizanidine hydrochloride)

Table 2: Single Dose, Placebo-Controlled Study—Common Adverse Events Reported

Event	Placebo N = 48 %	Tizanidine Tablet, 8mg, N = 45 %	Tizanidine Tablet, 16 mg, N = 49 %
Somnolence	31	78	92
Dry mouth	35	76	88
Asthenia*	40	67	78
Dizziness	4	22	45
Hypotension	0	16	33
Bradycardia	0	2	10

* (weakness, fatigue, and/or tiredness)

OTHER ADVERSE EVENTS OBSERVED DURING THE EVALUATION OF TIZANIDINE

Tizanidine was administered to 1385 patients in additional clinical studies where adverse event information was available. The conditions and duration of exposure varied greatly, and included (in overlapping categories) double-blind and open-label studies, uncontrolled and controlled studies, inpatient and outpatient studies, and titration studies. Untoward events associated with this exposure were recorded by clinical investigators using terminology of their own choosing. Consequently, it is not possible to provide a meaningful estimate of the proportion of individuals experiencing adverse events without first grouping similar types of untoward events into a smaller number of standardized event categories.

In the tabulations that follow, reported adverse events were classified using a standard COSTART-based dictionary terminology. The frequencies presented, therefore, represent the proportion of the 1385 patients exposed to tizanidine who experienced an event of the type cited on at least one occasion while receiving tizanidine. All reported events are included except those already listed in Table 1. If the COSTART term for an event was so general as to be uninformative, it was replaced by a more informative term. It is important to emphasize that, although the events reported occurred during treatment with tizanidine, they were not necessarily caused by it.

Events are further categorized by body system and listed in order of decreasing frequency according to the following definitions: frequent adverse events are those occurring on one or more occasions in at least 1/100 patients (only those not already listed in the tabulated results from placebo-controlled studies appear in this listing); infrequent adverse events are those occurring in 1/100 to 1/1000 patients; rare adverse events are those occurring in fewer than 1/1000 patients.

BODY AS A WHOLE

Frequent: Fever
Infrequent: Allergic reaction, moniliasis, malaise, abscess, neck pain, sepsis, cellulites, death, overdose
Rare: Carcinoma, congenital anomaly, suicide attempt

CARDIOVASCULAR SYSTEM

Infrequent: Vasodilatation, postural hypotension, syncope, migraine, arrhythmia
Rare: Angina pectoris, coronary artery disorder, heart failure, myocardial infarct, phlebitis, pulmonary embolus, ventricular extrasystoles, ventricular tachycardia

DIGESTIVE SYSTEM

Frequent: Abdomen pain, diarrhea, dyspepsia
Infrequent: Dysphagia, cholelithiasis, fecal impaction, flatulence, gastrointestinal hemorrhage, hepatitis, melena,
Rare: Gastroenteritis, hematemesis, hepatoma, intestinal obstruction, liver damage

HEMIC AND LYMPHATIC SYSTEM

Infrequent: Ecchymosis, hypercholesteremia, anemia, hyperlipemia, leukopenia, leukocytosis, sepsis
Rare: Petechia, purpura, thrombocytopenia, thrombocytopenia

METABOLIC AND NUTRITIONAL SYSTEM

Infrequent: Edema, hypothyroidism, weight loss
Rare: Adrenal cortex insufficiency, hyperglycemia, hypokalemia, hyponatremia, hypoproteinemia, respiratory acidosis

MUSCULOSKELETAL SYSTEM

Frequent: Myasthenia, back pain
Infrequent: Pathological fracture, arthralgia, arthritis, bursitis

NERVOUS SYSTEM

Frequent: Depression, anxiety, paresthesia
Infrequent: Tremor, emotional lability, convulsion, paralysis, thinking abnormal, vertigo, abnormal dreams, agitation, depersonalization, euphoria, migraine, stupor, dysautonomia, neuralgia
Rare: Dementia, hemiplegia, neuropathy

RESPIRATORY SYSTEM

Infrequent: Sinusitis, pneumonia, bronchitis
Rare: Asthma

SKIN AND APPENDAGES

Frequent: Rash, sweating, skin ulcer
Infrequent: Pruritus, dry skin, acne, alopecia, urticaria
Rare: Exfoliative dermatitis, herpes simplex, herpes zoster, skin carcinoma

SPECIAL SENSES

Infrequent: Ear pain, tinnitus, deafness, glaucoma, conjunctivitis, eye pain, optic neuritis, otitis media, retinal hemorrhage, visual field defect
Rare: Iritis, keratitis, optic atrophy

UROGENITAL SYSTEM

Infrequent: Urinary urgency, cystitis, menorrhagia, pyelonephritis, urinary retention, kidney calculus, uterine fibroids enlarged, vaginal moniliasis, vaginitis
Rare: Albuminuria, glycosuria, hematuria, metrorrhagia

DRUG ABUSE AND DEPENDENCE

Abuse potential was not evaluated in human studies. Rats were able to distinguish tizanidine from saline in a standard discrimination paradigm, after training, but failed to generalize the effects of morphine, cocaine, diazepam, or phenobarbital to tizanidine. Monkeys were shown to self-administer tizanidine in a dose-dependent manner, and abrupt cessation of tizanidine produced transient signs of withdrawal at doses > 35 times the maximum recommended human dose on a mg/m² basis. These transient withdrawal signs (increased locomotion, body twitching, and aversive behavior toward the observer) were not reversed by naloxone administration. Tizanidine is closely related to clonidine, which is often abused in combination with narcotics and is known to cause symptoms of rebound upon abrupt withdrawal. Three cases of rebound symptoms on sudden withdrawal of tizanidine have been reported. The case reports suggest that these patients were also misusing narcotics. Withdrawal symptoms included

Zanaflex Capsules™ (tizanidine hydrochloride)

hypertension, tachycardia, hypertonia, tremor, and anxiety. As with clonidine, withdrawal is expected to be more likely in cases where high doses are used, especially for prolonged periods.

OVERDOSAGE

A review of the safety surveillance database revealed cases of intentional and accidental tizanidine overdose. Some of the cases resulted in fatality and many of the intentional overdoses were with multiple drugs including CNS depressants. The clinical manifestations of tizanidine overdose were consistent with its known pharmacology. In the majority of cases a decrease in sensorium was observed including lethargy, somnolence, confusion and coma. Depressed cardiac function are also observed including most often bradycardia and hypotension. Respiratory depression is another common feature of tizanidine overdose.

Should overdose occur, basic steps to ensure the adequacy of an airway and the monitoring of cardiovascular and respiratory systems should be undertaken. In general, symptoms resolve within one to three days following discontinuation of tizanidine and administration of appropriate therapy. Due to the similar mechanism of action, symptoms and management of tizanidine overdose are similar to those following clonidine overdose. For the most recent information concerning the management of overdose, contact a poison control center.

DOSAGE AND ADMINISTRATION

A single dose of 8 mg of tizanidine reduces muscle tone in patients with spasticity for a period of several hours. The effect peaks at approximately 1 to 2 hours and dissipates between 3 to 6 hours. Effects are dose-related.

Although single doses of less than 8 mg have not been demonstrated to be effective in controlled clinical studies, the dose-related nature of tizanidine's common adverse events make it prudent to begin treatment with single oral doses of 4 mg. Increase the dose gradually (2 to 4 mg steps) to optimum effect (satisfactory reduction of muscle tone at a tolerated dose).

The dose can be repeated at 6 to 8 hour intervals, as needed, to a maximum of three doses in 24 hours. The total daily dose should not exceed 36 mg.

Experience with single doses exceeding 8 mg and daily doses exceeding 24 mg is limited. There is essentially no experience with repeated, single, daytime doses greater than 12 mg or total daily doses greater than 36 mg (see WARNINGS).

Food has complex effects on tizanidine pharmacokinetics, which differ with the different formulations. These pharmacokinetic differences may result in clinically significant differences when [1] switching administration of the tablet between the fed or fasted state, [2] switching administration of the capsule between the fed or fasted state, [3] switching between the tablet and capsule in the fed state, or [4] switching between the intact capsule and sprinkling the contents of the capsule on applesauce. These changes may result in increased adverse events or delayed/more rapid onset of activity, depending upon the nature of the switch. For this reason, the prescriber should be thoroughly familiar with the changes in kinetics associated with these different conditions (see CLINICAL PHARMACOLOGY: Pharmacokinetics).

HOW SUPPLIED

Zanaflex Capsules™

Zanaflex Capsules™ (tizanidine hydrochloride) are available in three strengths as two-piece hard gelatin capsules containing tizanidine hydrochloride 2 mg, 4 mg or 6 mg. The 2 mg capsules have a standard blue opaque body with a standard blue opaque cap with "2 MG" printed on the cap. The 4 mg capsules have a white opaque body with a standard blue opaque cap with "4 MG" printed on the cap. The 6 mg capsules have a light blue opaque body with a white stripe and light blue opaque cap with "6 MG" printed on the capsules. The capsules are provided as follows:

Zanaflex Capsules™ (tizanidine hydrochloride), 2 mg, bottles of 150 capsules

(NDC 10144-602-15)

Zanaflex Capsules™ (tizanidine hydrochloride), 4 mg, bottles of 150 capsules

(NDC 10144-604-15)

Zanaflex Capsules™ (tizanidine hydrochloride), 6 mg, bottles of 150 capsules

(NDC 10144-606-15)

Store at 25°C (77°F); excursions permitted to 15–30°C (59–86°F) [see USP Controlled Room Temperature]. Dispense in containers with child resistant closure

Zanaflex® tablets

Zanaflex® (tizanidine hydrochloride) tablets are available in two strengths as white, uncoated tablets containing tizanidine hydrochloride 2 mg or 4 mg. The 2 mg tablets have a bisecting score on one side and debossed with "A592" on the other side. The 4 mg tablets have a quadrisectioning score on one side and are debossed with "A594" on the other side. Tablets are provided as follows:

Zanaflex® (tizanidine hydrochloride) tablets, 2 mg, bottles of 150 tablets

(NDC 10144-592-15)

Zanaflex® (tizanidine hydrochloride) tablets, 4 mg, bottles of 150 tablets

(NDC 10144-594-15)

Store at 25°C (77°F); excursions permitted to 15–30°C (59–86°F) [see USP Controlled Room Temperature]. Dispense in containers with child resistant closure

Rx Only

Zanaflex® is the registered trademark of Elan Pharmaceuticals Inc. Zanaflex Capsules™ is the trademark of Elan Pharmaceuticals Inc.

Manufactured by:
Elan Pharma International, Ltd.
Athlone, Ireland

Marketed and Distributed by:
Acorda Therapeutics Inc.
Hawthorne, NY 10532

©2006, Acorda Therapeutics Inc., All rights reserved.
ZanaflexTabCap0001
ZC000xx

Rev. 7/06

ACORDA®
T H E R A P E U T I C S